



RebelApps Introduction

RebelApps Homepage: <https://www.it.unlv.edu/rebelapps>

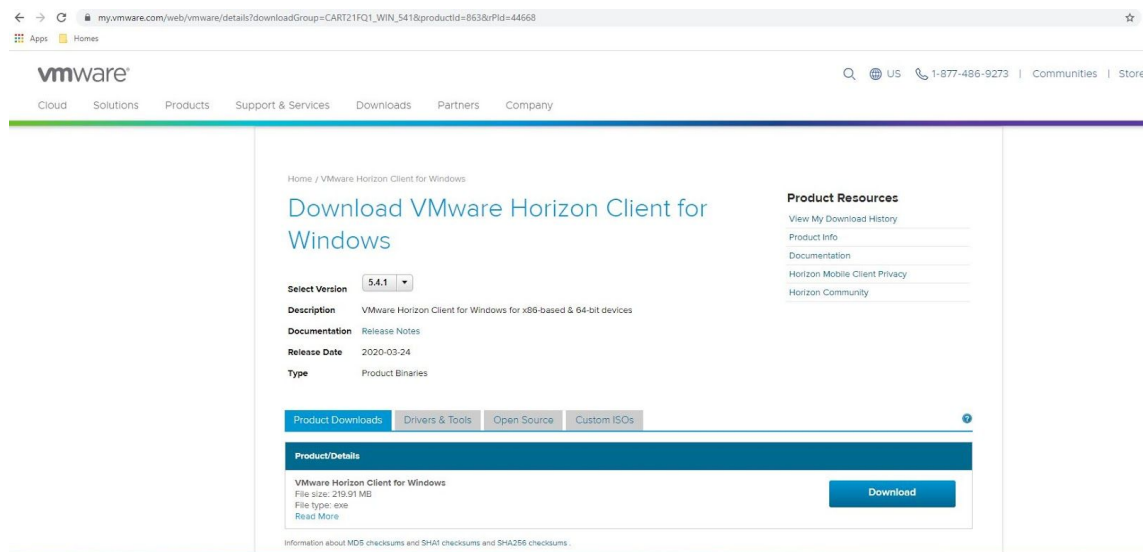
IT Help Desk: 702-895-0777

Introduction

RebelApps provides access to software on various devices, anytime, anywhere. Students can directly access SPSS as a remote application or connect to a virtual desktop, which resembles the experience of visiting the computer lab on campus. A visit to the virtual computer lab provides access to [40+ specialized softwares](#).

Installation

In order to utilize RebelApps, it is recommended to use the VMware Horizon Client. Download instructions can be found at the RebelApps homepage, <http://it.unlv.edu/rebelapps>.

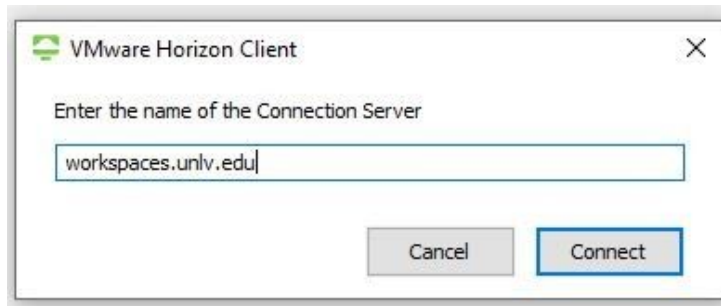


Download and install the software that matches your device. Mobile users of iOS, Android, or ChromeOS can download and install from their app store. For use on mobile devices (e.g. iOS and Android) at least a 9-inch screen and a physical keyboard are strongly recommended. While the client will run on a smaller device or one without a keyboard, the application may be difficult to use.

Configuration

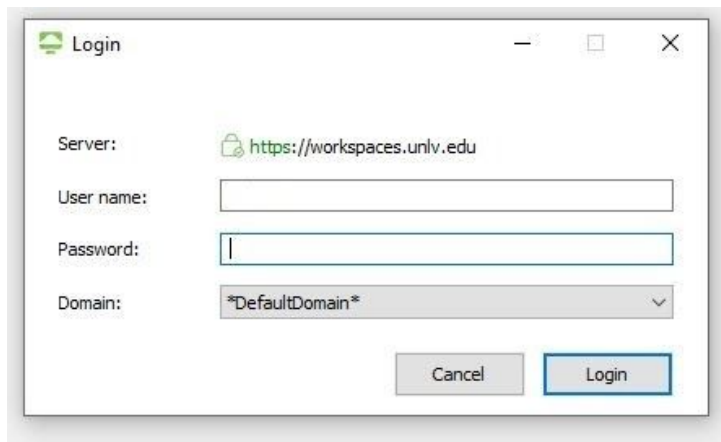
Once the software is installed you may be prompted to restart. After this restart, open the VMware Horizon Client.

After opening the VMware Horizon Client click on 'Add Server' input 'workspaces.unlv.edu'



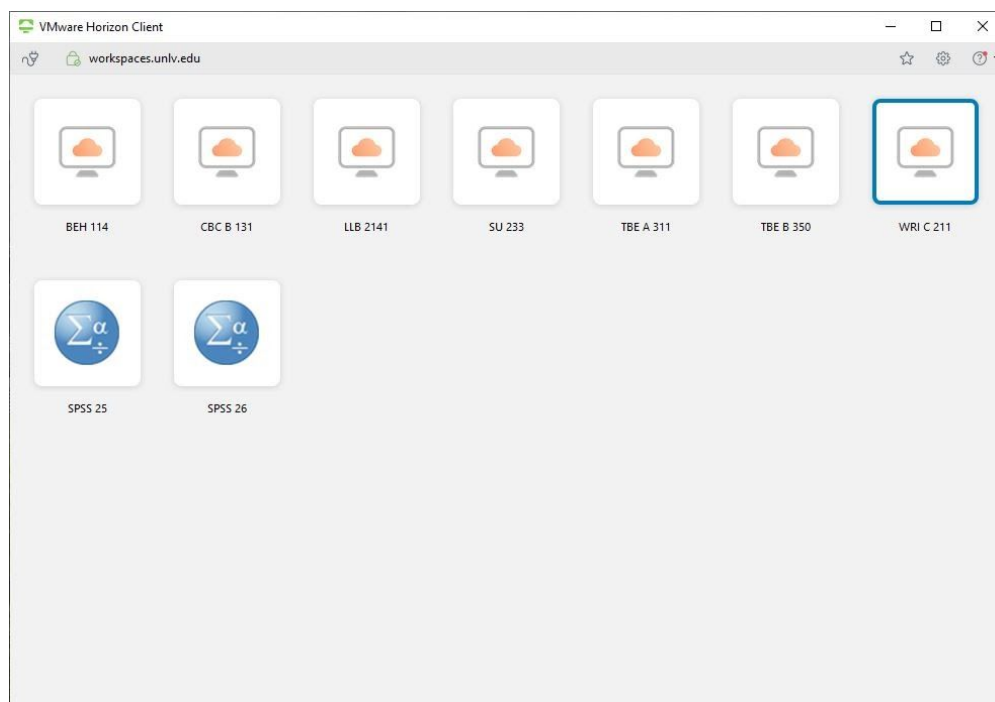
Click connect.

Input your ACE username and password to log in.

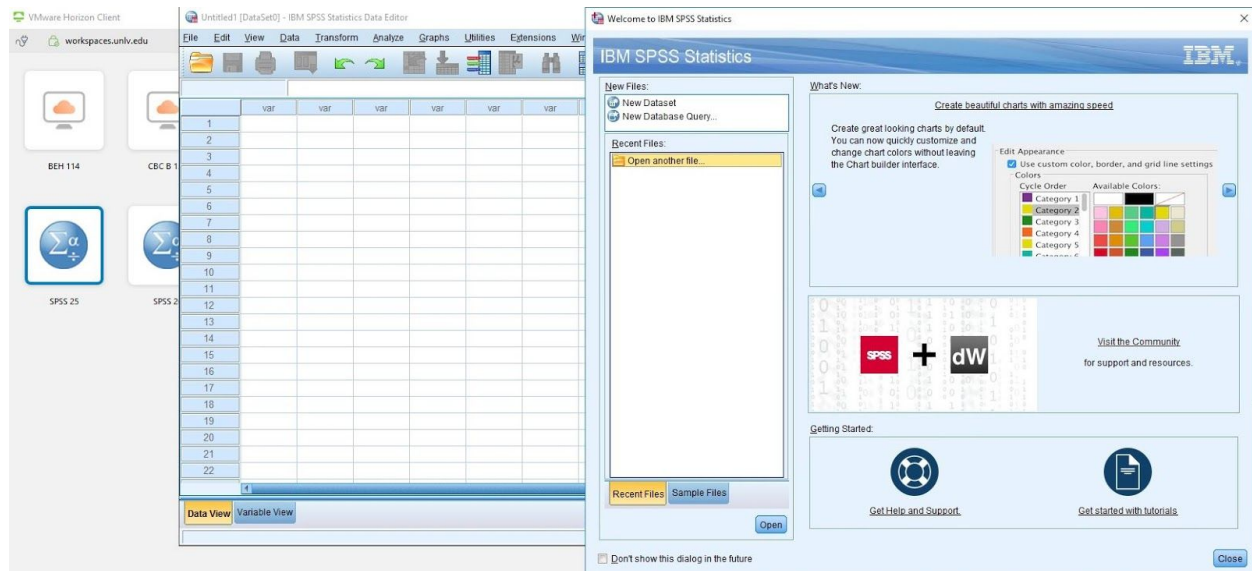


Usage

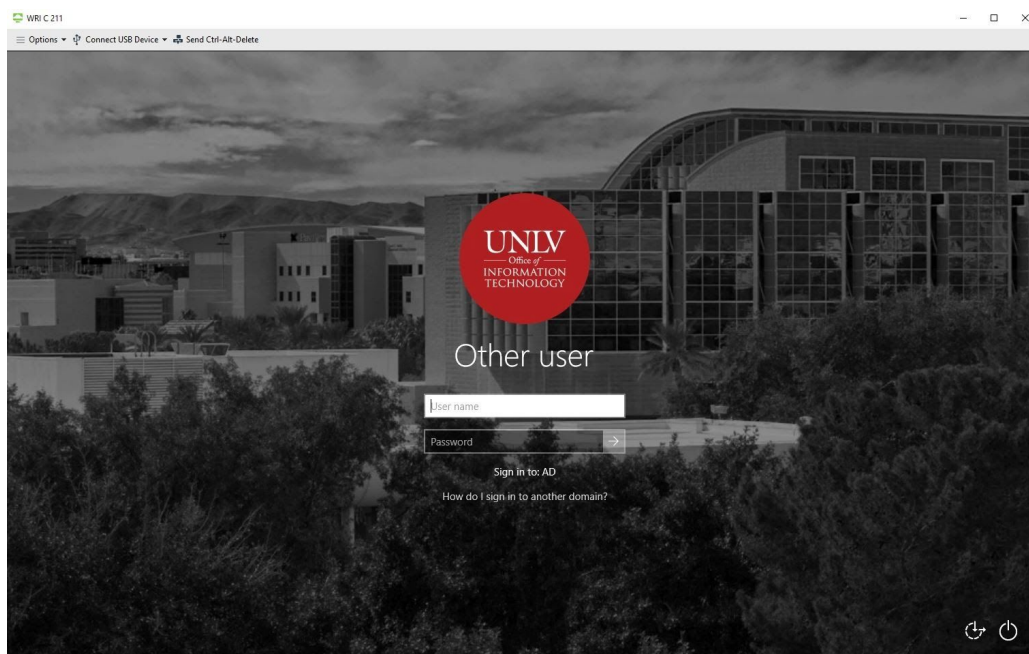
Once logged on you'll be presented with the list of available computer labs and SPSS software. If you only want to use SPSS, you should select SPSS 25 or 26, as this provides the best experience.



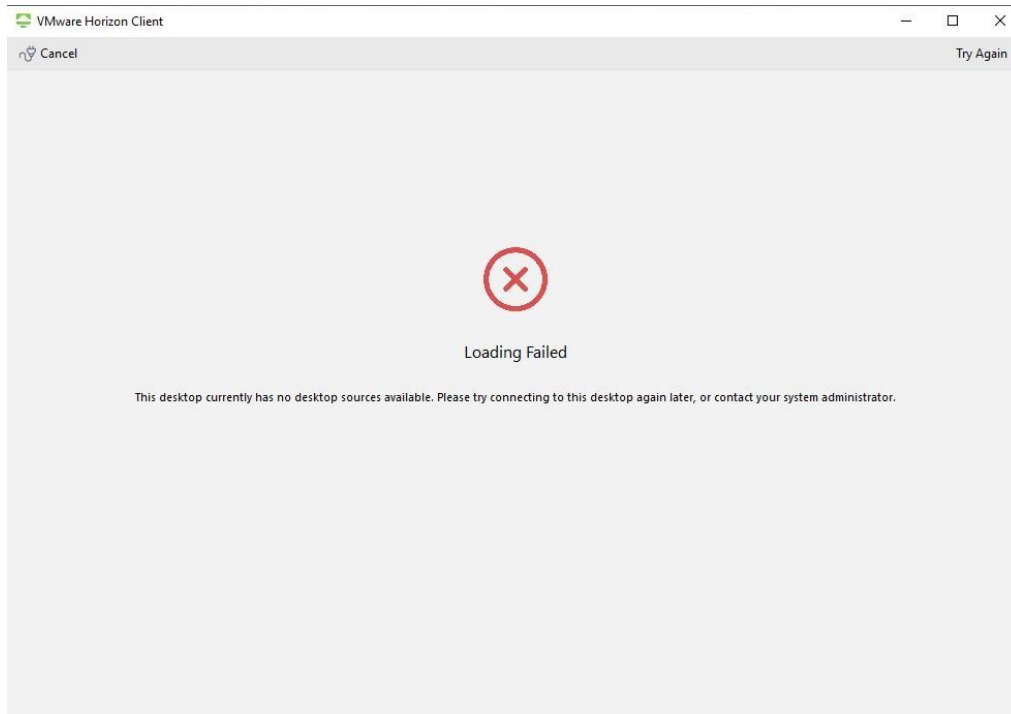
If you select SPSS instead of a computer lab, use as you would on any workstation.



Softwares other than SPSS can be accessed through the virtual computer lab. Login with your ACE account, like you would at a computer in a lab on campus. Notice that the number lock key may be off.



If a lab is at capacity, a notification screen will appear that says “Loading Failed.”



Click “cancel,” and you will return to the lab selection screen where you can select another workspace.

Storage

File and folders presented in the Open and Save dialogs are on the REMOTE server (“This PC”). These locations are temporary and should NOT be relied upon, with the following exceptions.

Y: Drive

This location (red arrow) represents your ACE storage on the UNLV network. This location is available from within RebelApps as well as other workstations you use with your ACE credentials while on campus. This location is persistent regardless if you’re using RebelApps or a workstation on campus, e.g. computer lab.

Z: Drive

This location (yellow arrow) represents a folder on YOUR personal device when using Windows, macOS, or Linux. The location of this folder varies on the operating system in use.

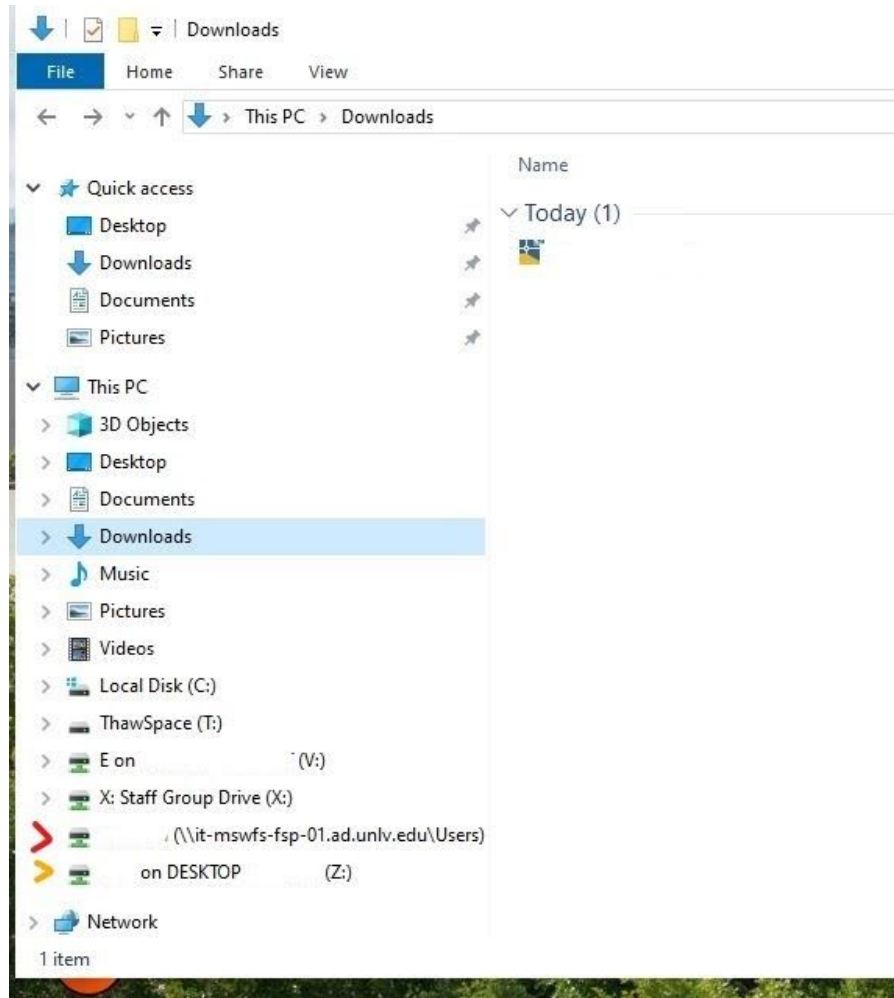
Windows > C:\Users\{username}

macOS > /Users/{username}

Linux > /home/{username}

You may be prompted to share your local files when you first start using VMware Horizon Client. This will allow you to access the files on your personal device while using the virtual desktop.

Make sure your files are saved to either one of these drives or an online cloud service (like Google Drive) to ensure your files are saved before disconnecting from the virtual desktop computer.



Printing

Printing to a physical printer is currently not supported. However, we have made a PDF printer available that will output any print jobs to a PDF file. During the printing process you can save this PDF to your local workstation (Drive Z) or your UNLV network storage (Drive Y). Once saved, you can print using your home printer.

Support

Currently all support requests should be routed through the IT Help Desk at 702-895-0777, ithelp@unlv.edu, or online at <https://www.it.unlv.edu/it-help-desk>. Keep in mind this is a new service and support representatives are still learning how to support RebelApps.